

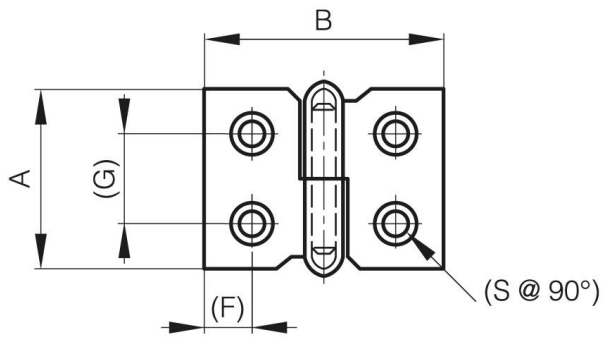


## **AUSHÄNGBARE SCHARNIERE LÄNGE 30 MM**

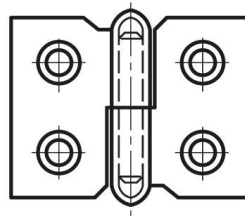
**14-7-3391**

<b>A</b>	30 mm
<b>Ausführung</b>	Typ 2
<b>Material</b>	Stahl

<b>Gewicht (g)</b>	16 g
<b>B</b>	40 mm
<b>C</b>	1.2 mm
<b>S (Lochdurchmesser)</b>	3 mm
<b>D (Durchmesser)</b>	4
<b>F (Abstand)</b>	7.7 mm
<b>G (Abstand)</b>	15 mm
<b>Dekor</b>	vernickelt



14-7-3390



14-7-3391

