



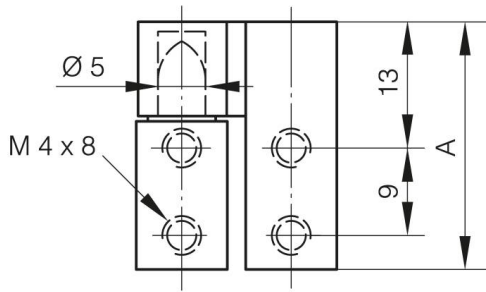
## **SCHARNIERE AUS ZAMAK 25.5 MM**

**72-1-4206**

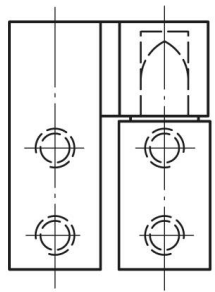
Unterlegscheibe aus Nylon.

<b>A</b>	25.5 mm
<b>Ausführung</b>	Typ 2
<b>Material</b>	Zamak

<b>Gewicht (g)</b>	30 g
<b>B</b>	20.5 mm
<b>C</b>	10 mm
<b>Dekor</b>	schwarz



72-1-4207



72-1-4206

