



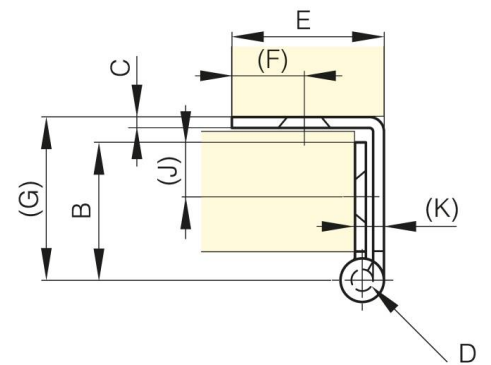
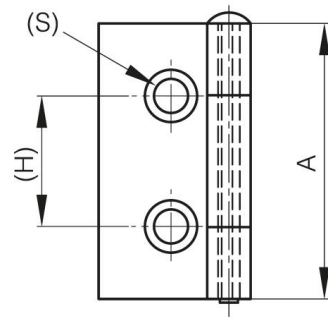
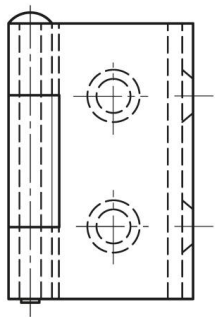
**BISAGRAS PEQUEÑAS CON UNA ALA  
ACODADA Y PASADOR EXTRAÍBLE DE 38  
MM**

**60-1-3342**

Pasador extraíble.

A	38 mm
---	-------

<b>Material</b>	acero
<b>Peso (g)</b>	31 g
<b>B</b>	19 mm
<b>C</b>	1.5 mm
<b>S (diamètre trou)</b>	4.7 mm
<b>E</b>	21 mm
<b>D</b>	3
<b>F</b>	10 mm
<b>G</b>	22.5 mm
<b>H</b>	18 mm
<b>Acabado</b>	cataforesis negra
<b>Material del husillo</b>	acero en bruto
<b>J</b>	7.5 mm



<b>K</b>	4 mm
----------	------