



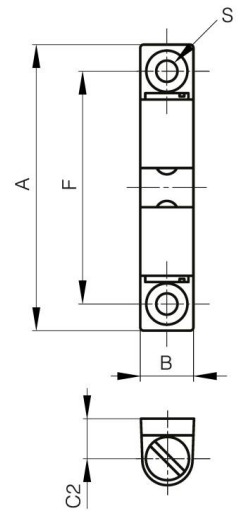
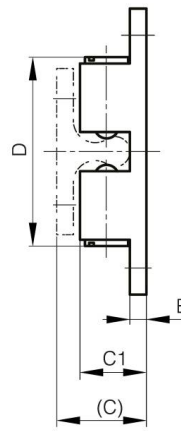
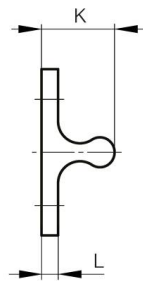
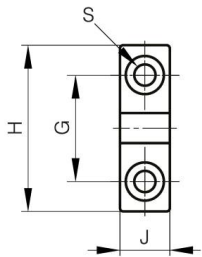
## **CIERRES DE DOBLE BOLA DE ACERO INOXIDABLE.**

**16-7-4305**

La fuerza de retención no es ajustable. No gire la parte de la ranura.

<b>A</b>	43 mm
<b>Material</b>	acero inoxidable 316

<b>Peso (g)</b>	18 g
<b>B</b>	8 mm
<b>C</b>	13.5 mm
<b>S (diamètre trou)</b>	3.2 mm
<b>E</b>	2.5 mm
<b>D</b>	28.4
<b>F</b>	35 mm
<b>G</b>	16 mm
<b>H</b>	25 mm
<b>Acabado</b>	pulido
<b>J</b>	7.5 mm
<b>L</b>	2.5 mm
<b>C1</b>	10 mm
<b>C2</b>	6 mm



<b>K</b>	11 mm
----------	-------