



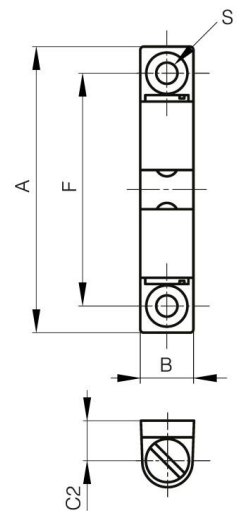
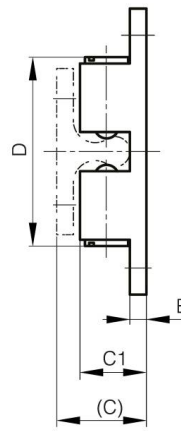
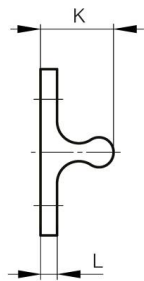
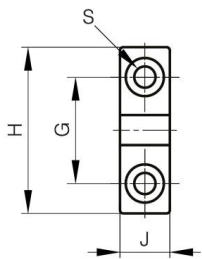
## **CIERRES DE DOBLE BOLA DE ACERO INOXIDABLE.**

**16-7-4306**

La fuerza de retención no es ajustable. No gire la parte de la ranura.

<b>A</b>	50 mm
<b>Material</b>	acero inoxidable 316

<b>Peso (g)</b>	30 g
<b>B</b>	10 mm
<b>C</b>	16.1 mm
<b>S (diamètre trou)</b>	4.2 mm
<b>E</b>	2.9 mm
<b>D</b>	31.5
<b>F</b>	40 mm
<b>G</b>	20 mm
<b>H</b>	30 mm
<b>Acabado</b>	pulido
<b>J</b>	9 mm
<b>L</b>	2.9 mm
<b>C1</b>	12.2 mm
<b>C2</b>	7.7 mm



<b>K</b>	13.2 mm
----------	---------