



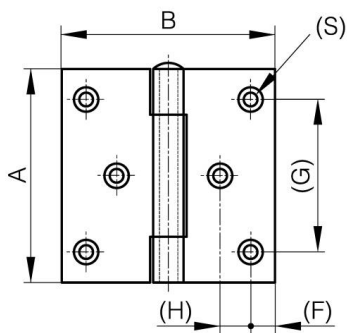
**BISAGRAS CUADRADAS DE DOS HOJAS
DESPLAZADAS Y PASADOR EXTRAÍBLE -
CON 6 AGUJEROS**

52-1-4107

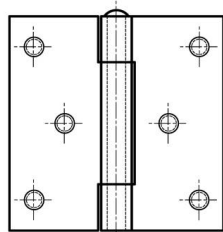
Pasador extraíble.

| | |
|----------|-------|
| A | 70 mm |
|----------|-------|

| | |
|---------------------------|----------------------|
| Nota | con pernos M5 |
| Material | acero inoxidable 304 |
| Peso (g) | 174 g |
| B | 70 mm |
| C | 2 mm |
| S (diamètre trou) | 4.5 mm |
| D | 6 |
| F | 8 mm |
| G | 50 mm |
| H | 10 mm |
| Acabado | crudo |
| Nouvelle référence | NS |



52-1-3614 & 52-1-3616



52-1-4107 & 52-1-4110

