



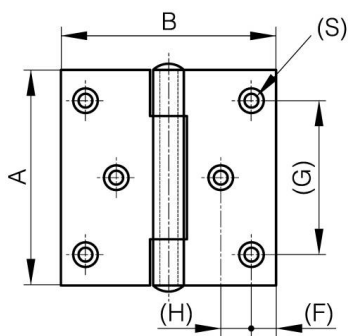
## **BISAGRAS CUADRADAS CON DOS HOJAS DESPLAZADAS Y PASADOR REMACHADO - CON 6 AGUJEROS**

**52-1-4111**

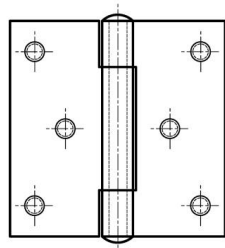
Pasador remachado.

<b>A</b>	80 mm
----------	-------

<b>Nota</b>	con pernos M5
<b>Material</b>	acero inoxidable 304
<b>Peso (g)</b>	182 g
<b>B</b>	80 mm
<b>C</b>	2.5 mm
<b>S (diamètre trou)</b>	4.5 mm
<b>D</b>	6
<b>F</b>	8 mm
<b>G</b>	60 mm
<b>H</b>	12.5 mm
<b>Acabado</b>	crudo
<b>Nouvelle référence</b>	NS



52-1-3615 & 52-1-3617



52-1-4108 & 52-1-4111

