



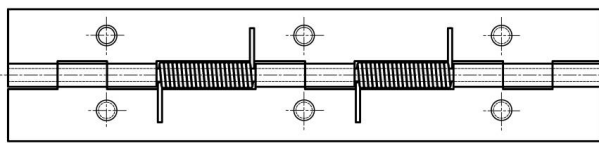
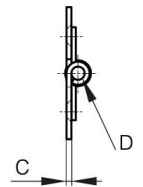
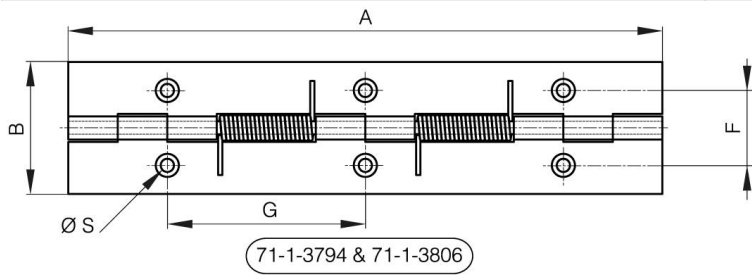
BISAGRAS CON RESORTE DE APERTURA DE 180 MM DE LARGO

71-1-3881

Fuerza del muelle de apertura: M(0°): 1,7 Nm / M(90°): 1,1 Nm / M(180°): 0,56 Nm Muelle de acero inoxidable.

A	180 mm
Nota	con pernos M5

Material	acero inoxidable 304
Peso (g)	142 g
B	40 mm
C	1.5 mm
S (diamètre trou)	4 mm
D	4
F	22.7 mm
G	60 mm
Acabado	crudo
Nouvelle référence	NS



71-1-3881 & 71-1-3890

