



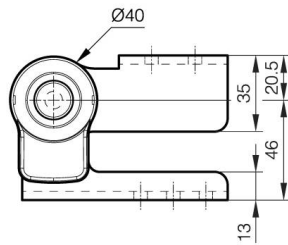
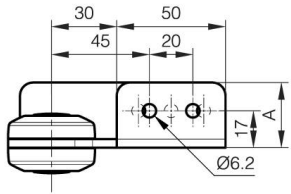
## **BISAGRA DE EJE LIBRE A**

**15-7-3569**

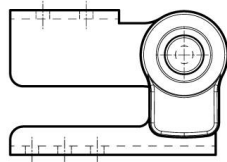
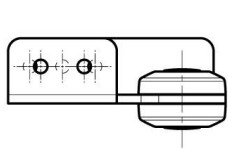
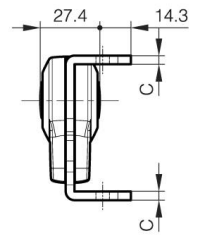
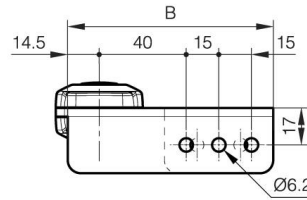
Bisagra de eje libre recomendada para asociar a la bisagra de bloqueo multiángulo con palanca A (15-7-3566 o 15-7-3567). Tornillos recomendados: M5.

<b>A</b>	30 mm
<b>Nota</b>	Tipo 2
<b>Material</b>	acero

<b>Peso (g)</b>	351 g
<b>B</b>	94.5 mm
<b>C</b>	4 mm
<b>Acabado</b>	niquelado
<b>Nouvelle référence</b>	NEW



15-7-3568



15-7-3569

