



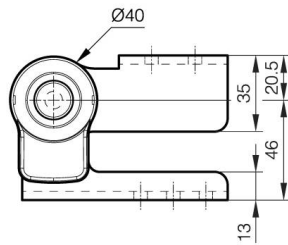
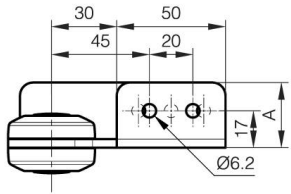
BISAGRA DE EJE LIBRE A

15-7-3568

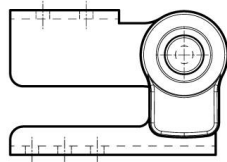
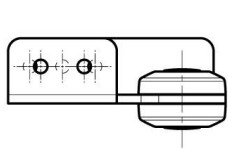
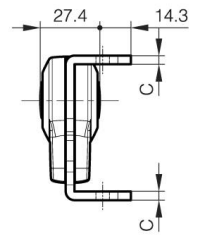
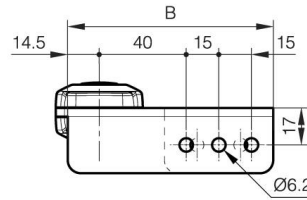
Bisagra de eje libre recomendada para asociar a la bisagra de bloqueo multiángulo con palanca A (15-7-3566 o 15-7-3567). Tornillos recomendados: M5.

A	30 mm
Nota	Tipo 1
Material	acero

Peso (g)	351 g
B	94.5 mm
C	4 mm
Acabado	niquelado
Nouvelle référence	NEW



15-7-3568



15-7-3569

