

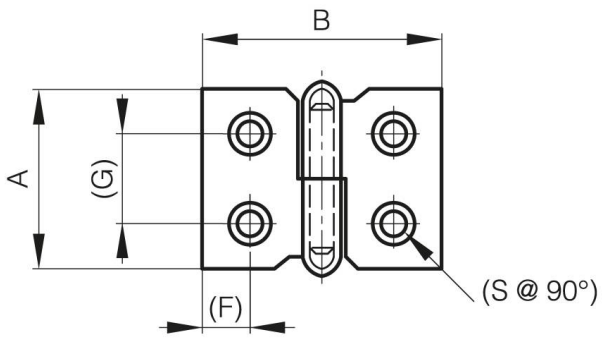


## **LIFT-OFF HINGES 30 MM LONG**

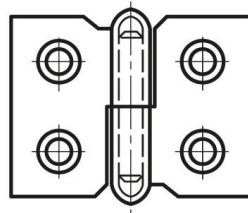
**14-7-3390**

<b>A (length)</b>	30 mm
<b>Note</b>	type 1
<b>Material</b>	steel
<b>Weight (g)</b>	16 g

<b>B (width)</b>	40 mm
<b>C</b>	1.2 mm
<b>S</b>	3 mm
<b>D (pin diameter)</b>	4
<b>F (pitch)</b>	7.7 mm
<b>G (pitch)</b>	15 mm



14-7-3390



14-7-3391

