



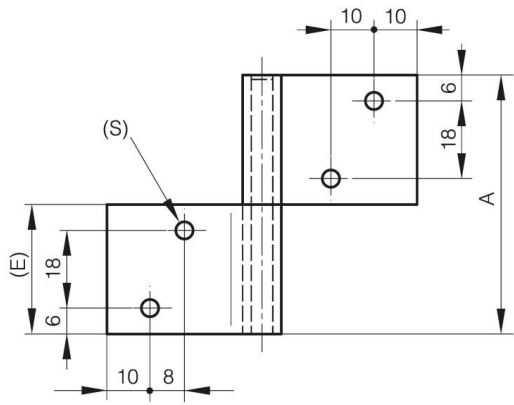
PIN HINGE WITH ONE CRANKED LEAF

12-1-3683

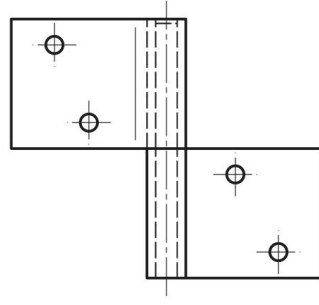
Produced mainly in stainless steel, for a complete description of the materials contact us.

A (length)	60 mm
Note	type 1
Material	304 stainless steel

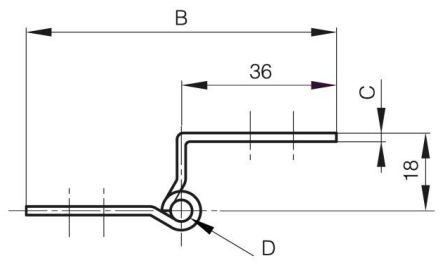
Weight (g)	70 g
B (width)	72 mm
C	2 mm
S	4 mm
E	30 mm
D (pin diameter)	5



12-1-3683



12-1-3682



D