



ZINC DIE-CAST DUAL BALL CATCHES

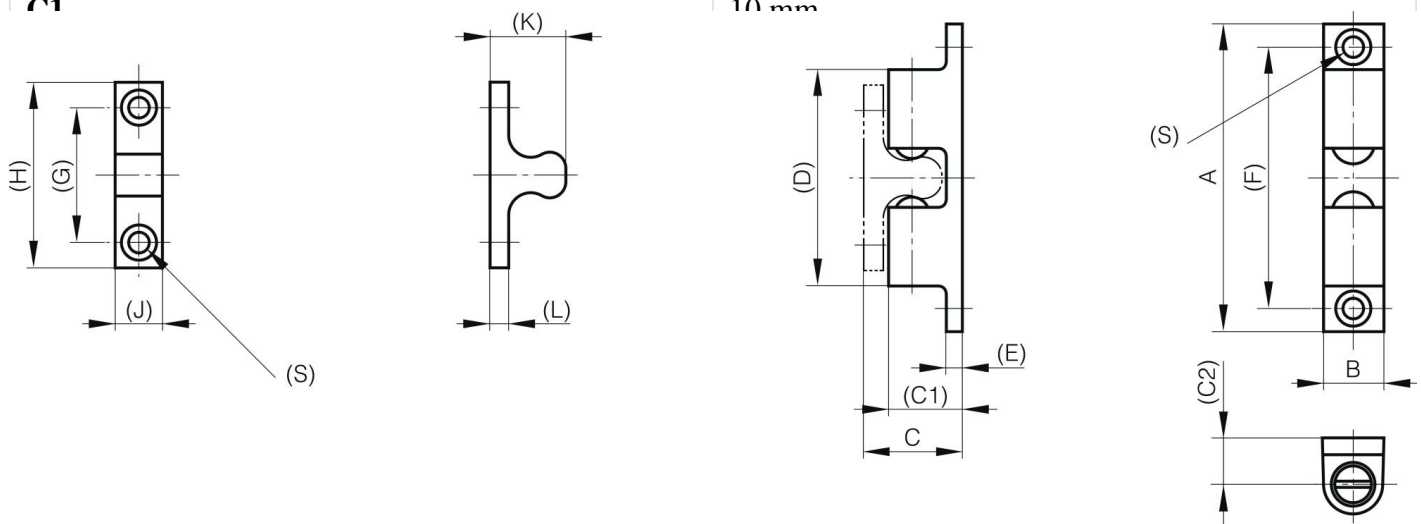
16-7-4211

Body: zinc die-cast, chrome plated.

Balls: steel.

A (length)	42.5 mm
Material	zinc die-cast
Weight (g)	16 g

B (width)	8 mm
C	14 mm
S	3.2 mm
E	2.5 mm
D (pin diameter)	26.7
F (pitch)	35 mm
G (pitch)	16 mm
H	25 mm
Finish	chrome plated
J	7.5 mm
L	2.5 mm
C1	10 mm



K	11.3 mm
----------	---------