



ZINC DIE-CAST LIFT-OFF HINGES 80 MM

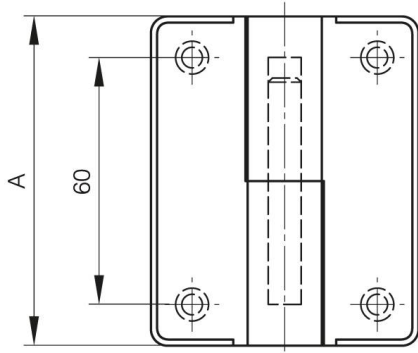
14-7-3814

Fixing by 2 threaded studs. Stainless steel pin.

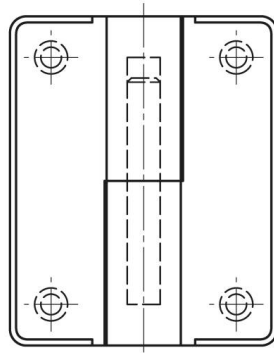
Leaves blocked with grub screw. Unscrew it to get a lift-off hinge.

A (length)	80 mm
Note	type 1
Material	zinc die-cast

Weight (g)	330 g
B (width)	65 mm
C	8 mm
D (pin diameter)	8
E (pitch)	60 mm



14-7-3814



14-7-3813

