



## **FULL EXTENSION BALL-BEARING SLIDE (3 PIECES), FRONT DISCONNECT AND POSITIVE LOCK**

**21-7-3574**

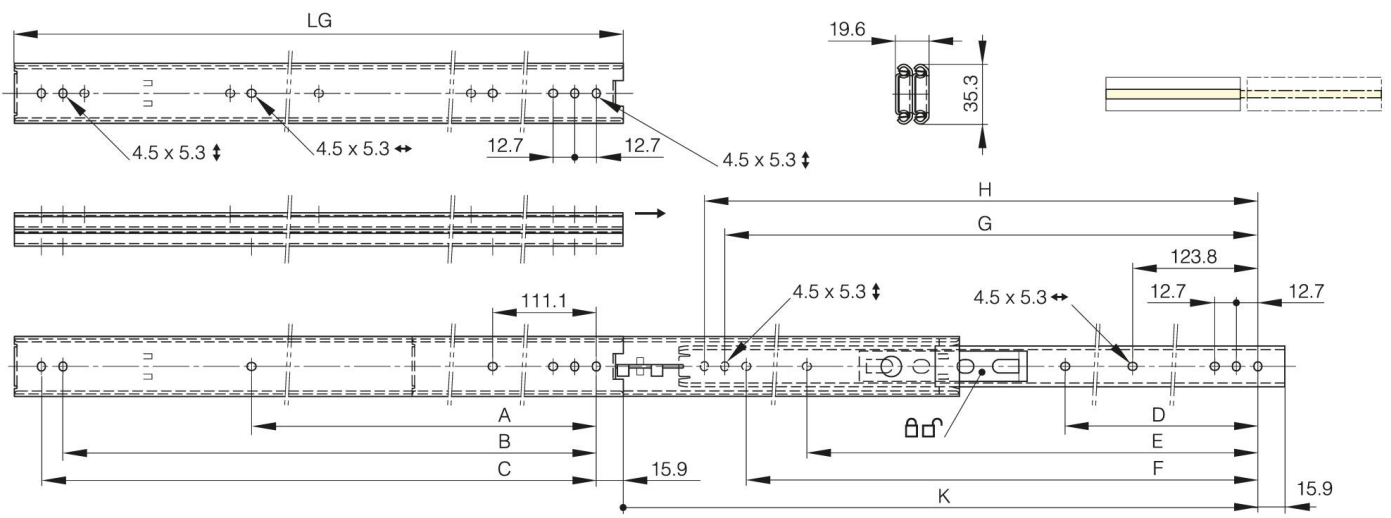
LG = slide length.

K = travel length.

CN = load rating (kg/pair).

Sold by the unit.

<b>A (length)</b>	504.8 mm
<b>Material</b>	304 stainless steel
<b>Weight (g)</b>	1400 g
<b>B (width)</b>	615.9 mm
<b>C</b>	628.6 mm
<b>E</b>	517.5 mm
<b>D (pin diameter)</b>	314.3
<b>F (pitch)</b>	603.2 mm
<b>G (pitch)</b>	615.9 mm
<b>H</b>	628.6 mm



<b>K</b>	675.7 mm
<b>LG (slide length)</b>	660.4 mm
<b>CN (load rating)</b>	39 kg/paire