



## **FULL EXTENSION BALL-BEARING SLIDE (3 PIECES), FRONT DISCONNECT AND POSITIVE LOCK**

**21-7-3575**

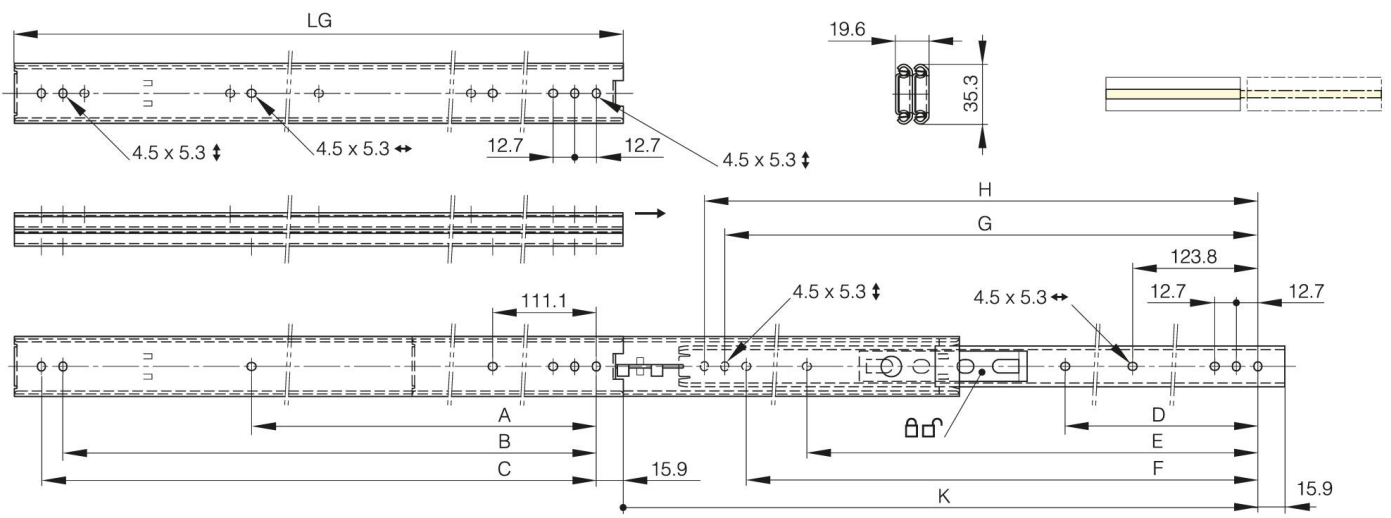
LG = slide length.

K = travel length.

CN = load rating (kg/pair).

Sold by the unit.

<b>A (length)</b>	555.6 mm
<b>Material</b>	304 stainless steel
<b>Weight (g)</b>	1500 g
<b>B (width)</b>	666.7 mm
<b>C</b>	679.4 mm
<b>E</b>	568.3 mm
<b>D (pin diameter)</b>	339.7
<b>F (pitch)</b>	654 mm
<b>G (pitch)</b>	666.7 mm
<b>H</b>	679.4 mm



<b>K</b>	726.5 mm
<b>LG (slide length)</b>	711.2 mm
<b>CN (load rating)</b>	36 kg/paire