



CLEAN ROOM LIFT-OFF HINGES - 65 X 60 MM

14-7-3877

No metal-to-metal contact. Polyacetal bushings minimize particles.

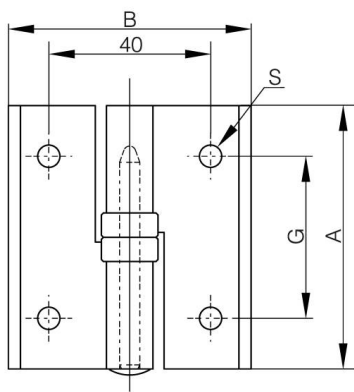
Door size: max. W600 x L800.

Door weight: max. 8 kg/pair.

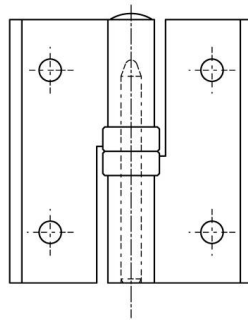
303 stainless steel pin.

A (length)	65 mm
-------------------	-------

Note	type 1
Material	aluminium
Weight (g)	49 g
B (width)	60 mm
C	3.5 mm
S	5.5 mm
D (pin diameter)	5
G (pitch)	10 mm



14-7-3877



14-7-3878

