



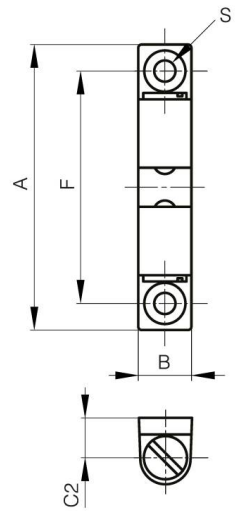
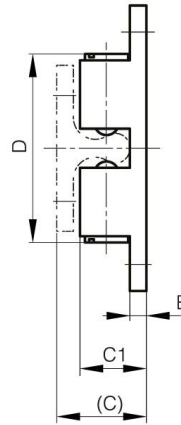
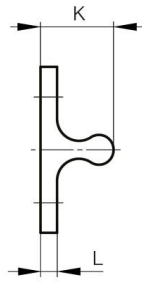
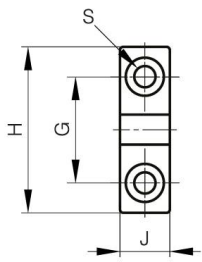
## STAINLESS STEEL DUAL BALL CATCHES

**16-7-4305**

Catch force is not adjustable. Do not turn the slot part.

<b>A (length)</b>	43 mm
<b>Material</b>	316 stainless steel
<b>Weight (g)</b>	18 g

<b>B (width)</b>	8 mm
<b>C</b>	13.5 mm
<b>S</b>	3.2 mm
<b>E</b>	2.5 mm
<b>D (pin diameter)</b>	28.4
<b>F (pitch)</b>	35 mm
<b>G (pitch)</b>	16 mm
<b>H</b>	25 mm
<b>Finish</b>	polished
<b>J</b>	7.5 mm
<b>L</b>	2.5 mm
<b>C1</b>	10 mm



<b>K</b>	11 mm
----------	-------