



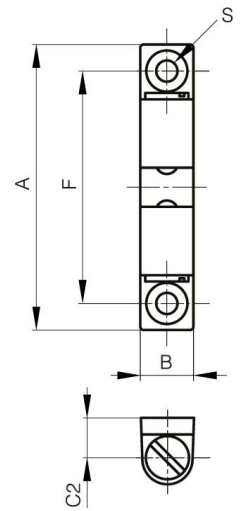
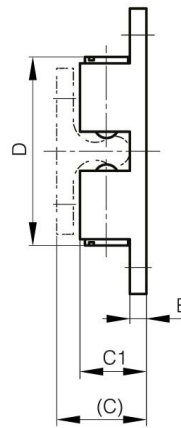
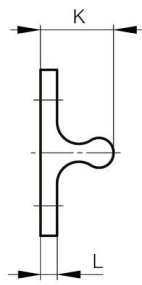
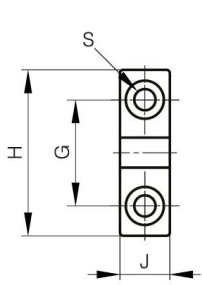
STAINLESS STEEL DUAL BALL CATCHES

16-7-4306

Catch force is not adjustable. Do not turn the slot part.

A (length)	50 mm
Material	316 stainless steel
Weight (g)	30 g

B (width)	10 mm
C	16.1 mm
S	4.2 mm
E	2.9 mm
D (pin diameter)	31.5
F (pitch)	40 mm
G (pitch)	20 mm
H	30 mm
Finish	polished
J	9 mm
L	2.9 mm
C1	12.2 mm



K	13.2 mm
----------	---------