



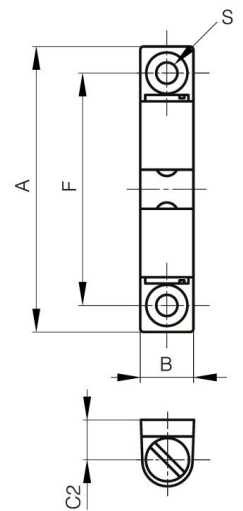
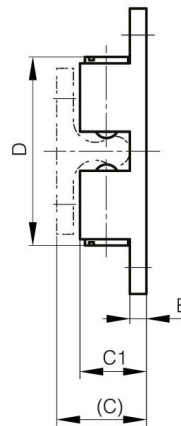
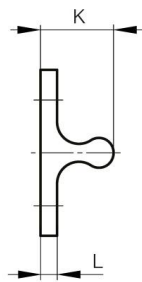
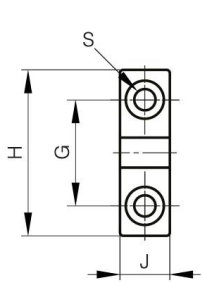
STAINLESS STEEL DUAL BALL CATCHES

16-7-4307

Catch force is not adjustable. Do not turn the slot part.

A (length)	70 mm
Material	316 stainless steel
Weight (g)	83 g

B (width)	13 mm
C	23 mm
S	4.2 mm
E	4 mm
D (pin diameter)	51
F (pitch)	60 mm
G (pitch)	30 mm
H	42 mm
Finish	polished
J	10.5 mm
L	4 mm
C1	17 mm



K	19 mm
----------	-------