



CONCEALED HINGES WITH TWO CRANKED LEAVES - DRILLED - 120° OPENING - VERSION B

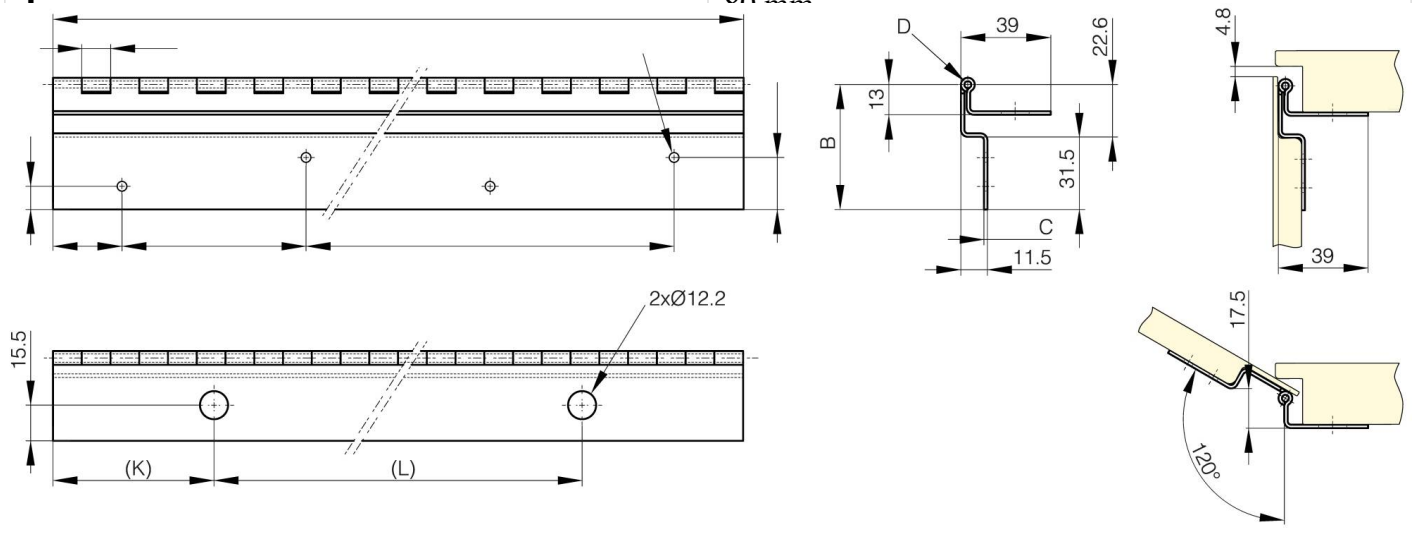
39-1-3890

Hinges for side door of baggage compartment (bus and coach, bodywork...)

Use rivets for 4.2 diameter holes (door side).

Use self-drilling screws for 12.2 diameter holes (frame side).

A (length)	300 mm
Material	304 stainless steel
Weight (g)	430 g
B (width)	54.1 mm
C	1.5 mm
E	12.5 mm
D (pin diameter)	3
G (pitch)	160 mm
H	30 mm
Finish	raw



K	70 mm
----------	-------