



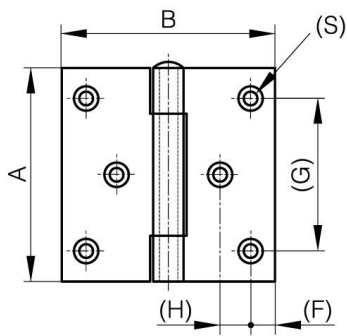
SQUARE HINGES WITH TWO OFFSET LEAVES AND REMOVABLE PIN - WITH 6 HOLES

52-1-4110

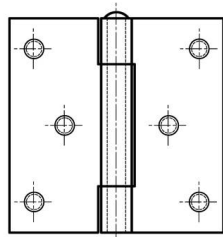
Removable pin.

A (length)	80 mm
-------------------	-------

Note	with M5 studs
Material	304 stainless steel
Weight (g)	182 g
B (width)	80 mm
C	2.5 mm
S	4.5 mm
D (pin diameter)	6
F (pitch)	8 mm
G (pitch)	60 mm
H	12.5 mm
Finish	...



52-1-3614 & 52-1-3616



52-1-4107 & 52-1-4110

