



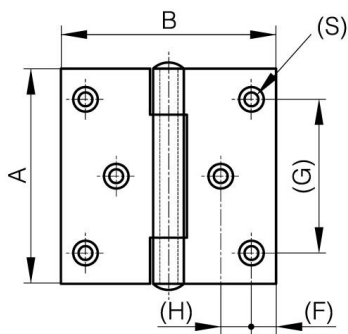
## **SQUARE HINGES WITH TWO OFFSET LEAVES AND RIVETED PIN - WITH 6 HOLES**

**52-1-4108**

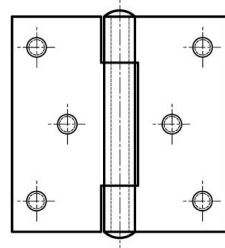
Riveted pin.

<b>A (length)</b>	70 mm
<b>Note</b>	with M5 studs

<b>Material</b>	304 stainless steel
<b>Weight (g)</b>	174 g
<b>B (width)</b>	70 mm
<b>C</b>	2 mm
<b>S</b>	4.5 mm
<b>D (pin diameter)</b>	6
<b>F (pitch)</b>	8 mm
<b>G (pitch)</b>	50 mm
<b>H</b>	10 mm
<b>Finish</b>	2011



52-1-3615 & 52-1-3617



52-1-4108 & 52-1-4111

