



TORQUE HINGE A

15-7-3578

Provides torque stability in both directions.

For pair using: please use the same torque in both hinges.

When installing, ensure that both hinge axis are aligned.

Cycle life: 20,000 cycles.

Operating temperature: 0°C - 40°C.

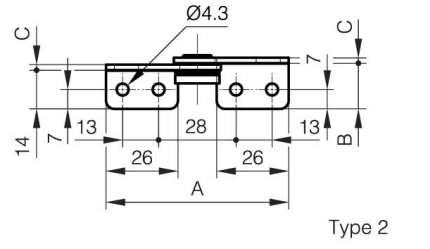
For horizontal applications.

| | |
|-------------------|-------|
| A (length) | 66 mm |
|-------------------|-------|

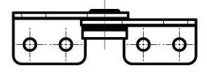
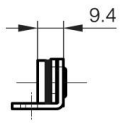
| | |
|-------------------|---------------------|
| Note | Type 1 |
| Material | 430 stainless steel |
| Weight (g) | 30 g |
| Torque | 2.0 N.m N.m |
| B (width) | 16.5 mm |
| C | 2 mm |

Finish

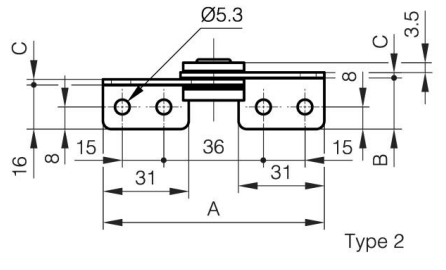
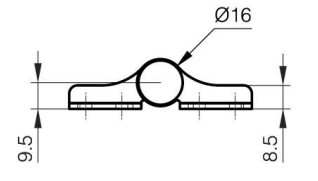
polished



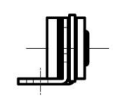
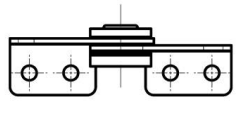
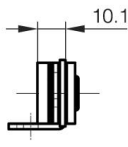
Type 2



Type 1



Type 2



Type 1

