



## TORQUE HINGE A

**15-7-3580**

Provides torque stability in both directions.

For pair using: please use the same torque in both hinges.

When installing, ensure that both hinge axis are aligned.

Cycle life: 20,000 cycles.

Operating temperature: 0°C - 40°C.

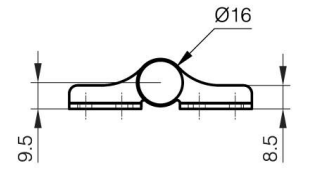
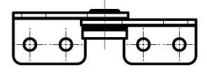
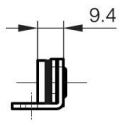
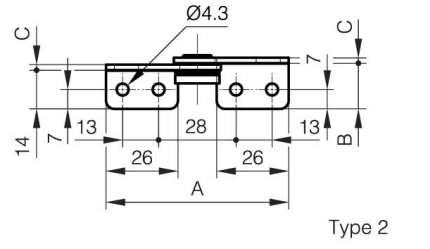
For horizontal applications.

<b>A (length)</b>	66 mm
-------------------	-------

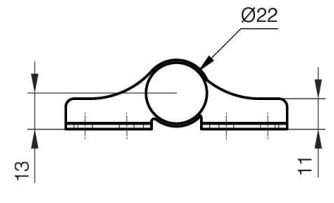
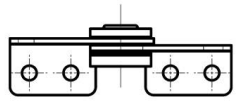
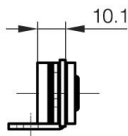
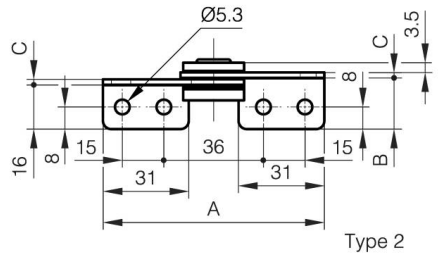
<b>Note</b>	Type 1
<b>Material</b>	430 stainless steel
<b>Weight (g)</b>	30 g
<b>Torque</b>	3.0 N.m N.m
<b>B (width)</b>	16.5 mm
<b>C</b>	2 mm

**Finish**

polished



Type 1



Type 1