



TORQUE HINGE A

15-7-3582

Provides torque stability in both directions.

For pair using: please use the same torque in both hinges.

When installing, ensure that both hinge axis are aligned.

Cycle life: 20,000 cycles.

Operating temperature: 0°C - 40°C.

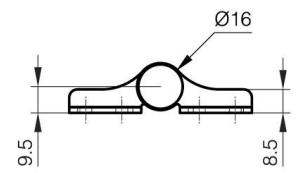
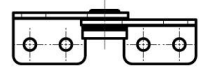
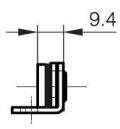
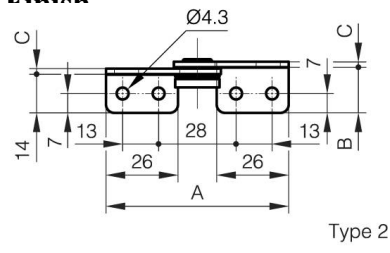
For horizontal applications.

A (length)	80 mm
-------------------	-------

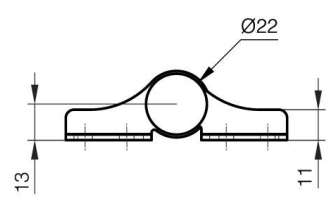
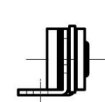
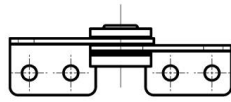
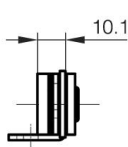
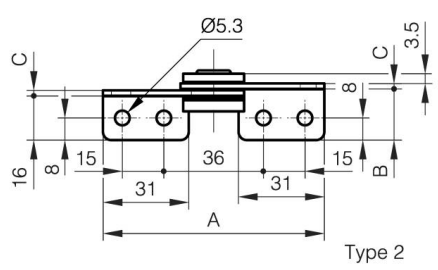
Note	Type 1
Material	430 stainless steel
Weight (g)	65 g
Torque	4.5 N.m N.m
B (width)	18.5 mm
C	2 mm

Finish

polished



Type 1



Type 1