



CONCEALED SPRINGLOADED PIN HINGES

A

12-1-4311

Stainless steel spring.

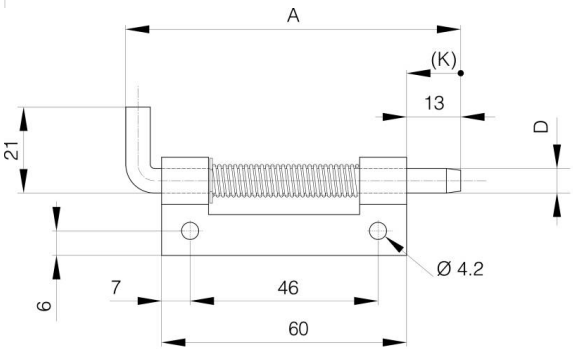
Hinges in raw steel and zinc plated steel with a zinc plated pin.

304 stainless steel pin for hinges in stainless steel.

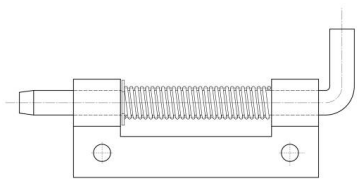
Circlip in 1.4122 stainless steel.

A (length)	82 mm
-------------------	-------

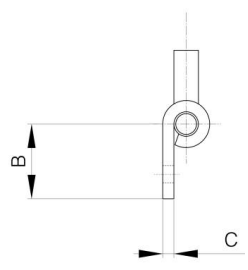
Note	type 1
Material	steel
Weight (g)	46 g
B (width)	18.2 mm
C	3 mm
D (pin diameter)	6
Finish	zinc plated



12-1-4313 & 12-1-4311 & 12-1-4315



12-1-4312 & 12-1-4310 & 12-1-4314



K	12 mm
----------	-------