



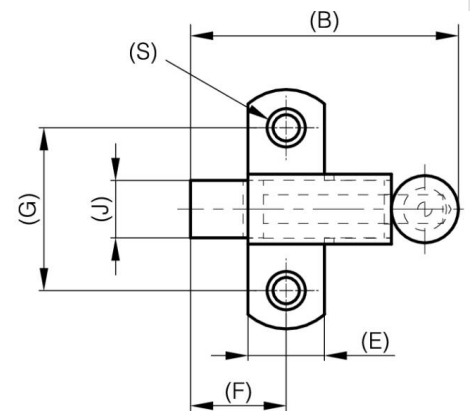
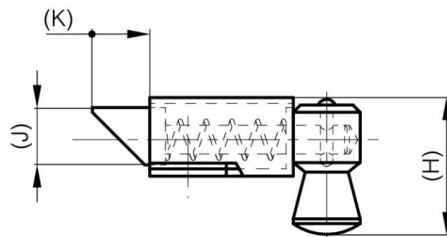
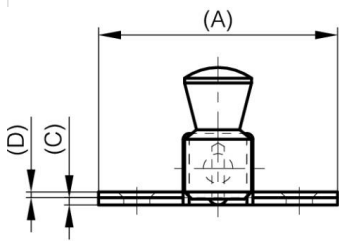
CONCEALED SPRINGLOADED LATCHES - BOLT "NOSE-UP"

16-1-4340

Slam latches.

A (length)	35 mm
Material	steel

Weight (g)	20 g
B (width)	36.5 mm
C	1.2 mm
S	3.5 mm
E	11 mm
D (pin diameter)	1
F (pitch)	13.5 mm
G (pitch)	23 mm
H	23.1 mm
Finish	zinc plated
J	8 mm



K	8 mm
----------	------