



## **BISAGRAS PEQUEÑAS CON UNA ALA ACODADA Y PASADOR EXTRAÍBLE DE 38 MM**

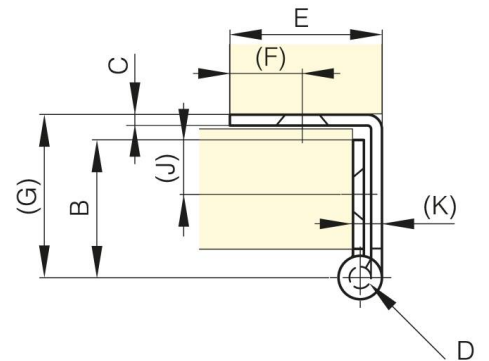
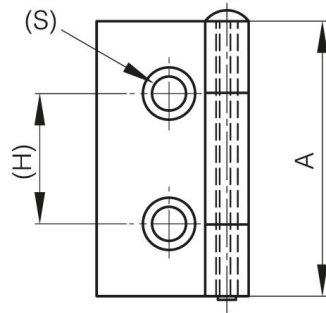
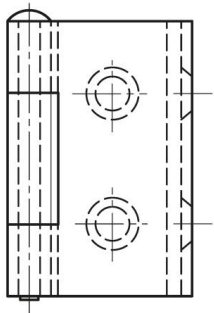
**60-1-3332**

Pasador extraíble.

**A**

38 mm

<b>Material</b>	acero
<b>Peso (g)</b>	31 g
<b>B</b>	19 mm
<b>C</b>	1.5 mm
<b>S (diamètre trou)</b>	4.7 mm
<b>E</b>	19 mm
<b>D</b>	3
<b>F</b>	10 mm
<b>G</b>	24.5 mm
<b>H</b>	18 mm
<b>Acabado</b>	Cromado
<b>Material del bujillo</b>	Acero inoxidable



<b>K</b>	4 mm
----------	------