



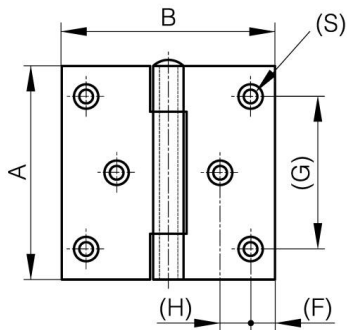
**BISAGRAS CUADRADAS DE DOS HOJAS  
DESPLAZADAS Y PASADOR EXTRAÍBLE -  
CON 6 AGUJEROS**

**50-7-3583**

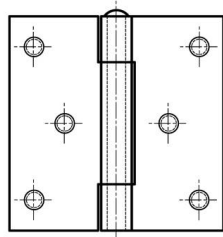
Pasador extraíble.

<b>A</b>	70 mm
----------	-------

<b>Material</b>	acero
<b>Peso (g)</b>	156 g
<b>B</b>	70 mm
<b>C</b>	2 mm
<b>S (diamètre trou)</b>	4 mm
<b>D</b>	6
<b>F</b>	8 mm
<b>G</b>	50 mm
<b>H</b>	10 mm



52-1-3614 & 52-1-3616



52-1-4107 & 52-1-4110

