



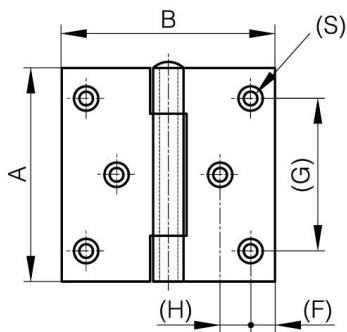
**BISAGRAS CUADRADAS DE DOS HOJAS
DESPLAZADAS Y PASADOR EXTRAÍBLE -
CON 6 AGUJEROS**

52-1-3616

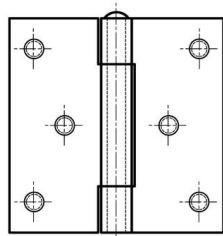
Pasador extraíble.

A	80 mm
----------	-------

Material	acero inoxidable 304
Peso (g)	164 g
B	80 mm
C	2.5 mm
S (diamètre trou)	4.5 mm
D	6
F	8 mm
G	60 mm
H	12.5 mm



52-1-3614 & 52-1-3616



52-1-4107 & 52-1-4110

