



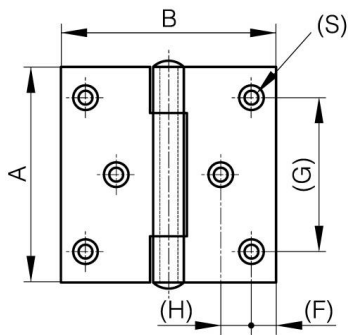
BISAGRAS CUADRADAS CON DOS HOJAS DESPLAZADAS Y PASADOR REMACHADO - CON 6 AGUJEROS

52-1-3617

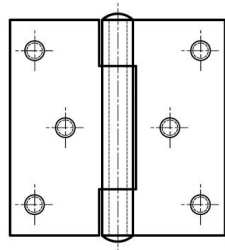
Pasador remachado.

A	80 mm
----------	-------

Material	acero inoxidable 304
Peso (g)	164 g
B	80 mm
C	2.5 mm
S (diamètre trou)	4.5 mm
D	6
F	8 mm
G	60 mm
H	12.5 mm



52-1-3615 & 52-1-3617



52-1-4108 & 52-1-4111

