



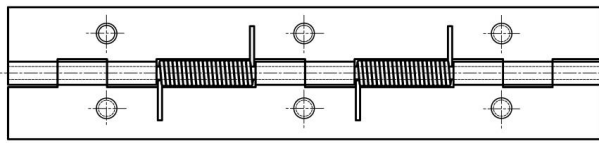
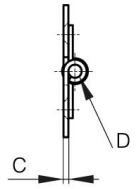
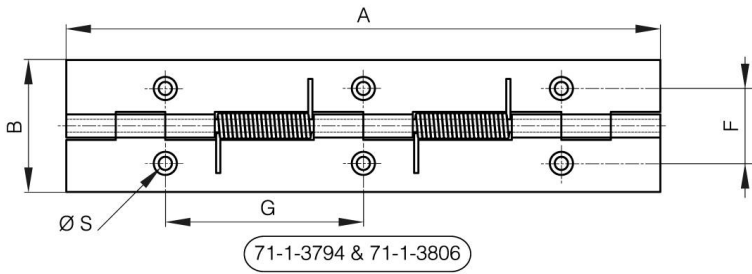
BISAGRAS CON RESORTE DE APERTURA DE 180 MM DE LARGO

71-1-3800

Fuerza del muelle de apertura: M(0°): 1,7 Nm / M(90°): 1,1 Nm / M(180°): 0,56 Nm Muelle de acero inoxidable.

A	180 mm
Nota	sin taladros

Material	acero
Peso (g)	124 g
B	40 mm
C	1.5 mm
D	4



71-1-3881 & 71-1-3890

