



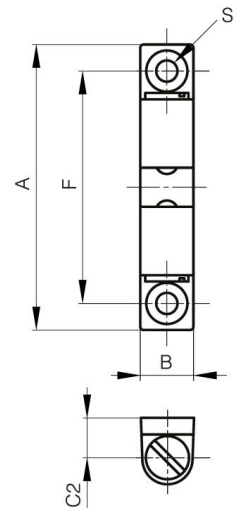
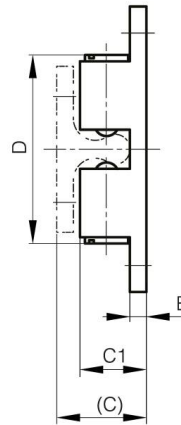
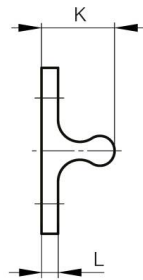
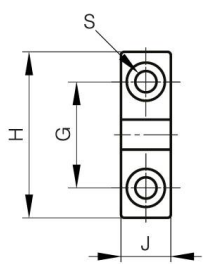
CIERRES DE DOBLE BOLA DE ACERO INOXIDABLE.

16-7-4305

La fuerza de retención no es ajustable. No gire la parte de la ranura.

A	43 mm
Material	acero inoxidable 316

Peso (g)	18 g
B	8 mm
C	13.5 mm
S (diamètre trou)	3.2 mm
E	2.5 mm
D	28.4
F	35 mm
G	16 mm
H	25 mm
Acabado	pulido
J	7.5 mm
L	2.5 mm
C1	10 mm



K	11 mm
----------	-------