



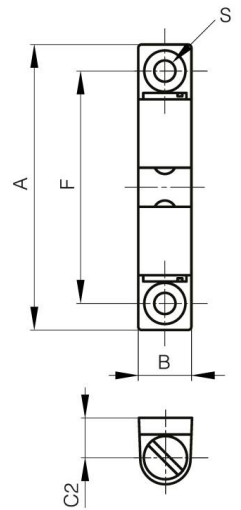
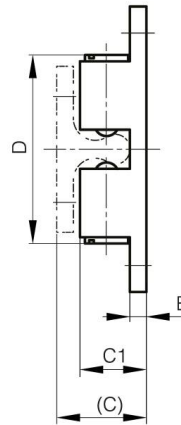
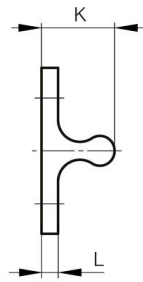
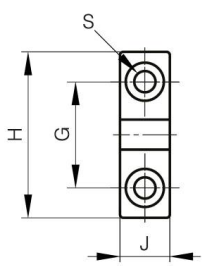
CIERRES DE DOBLE BOLA DE ACERO INOXIDABLE.

16-7-4306

La fuerza de retención no es ajustable. No gire la parte de la ranura.

A	50 mm
Material	acero inoxidable 316

Peso (g)	30 g
B	10 mm
C	16.1 mm
S (diamètre trou)	4.2 mm
E	2.9 mm
D	31.5
F	40 mm
G	20 mm
H	30 mm
Acabado	pulido
J	9 mm
L	2.9 mm
C1	13.2 mm



K	13.2 mm
----------	---------