



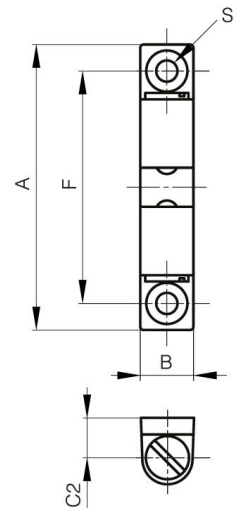
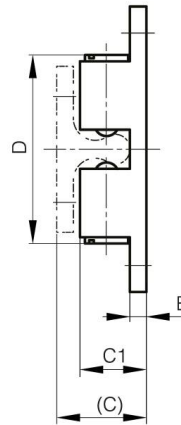
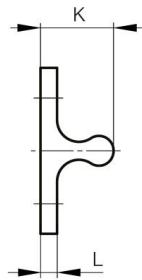
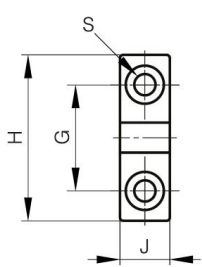
CIERRES DE DOBLE BOLA DE ACERO INOXIDABLE.

16-7-4307

La fuerza de retención no es ajustable. No gire la parte de la ranura.

A	70 mm
Material	acero inoxidable 316

Peso (g)	83 g
B	13 mm
C	23 mm
S (diamètre trou)	4.2 mm
E	4 mm
D	51
F	60 mm
G	30 mm
H	42 mm
Acabado	pulido
J	10.5 mm
L	4 mm
C1	17 mm



K	19 mm
----------	-------