



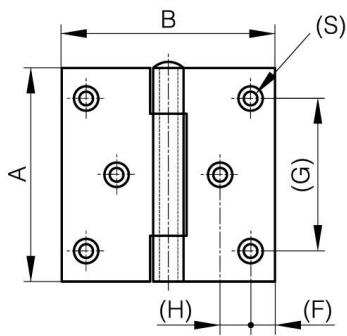
**BISAGRAS CUADRADAS DE DOS HOJAS
DESPLAZADAS Y PASADOR EXTRAÍBLE -
CON 6 AGUJEROS**

52-1-4107

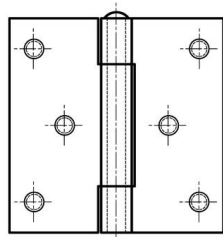
Pasador extraíble.

A	70 mm
----------	-------

Nota	con pernos M5
Material	acero inoxidable 304
Peso (g)	174 g
B	70 mm
C	2 mm
S (diamètre trou)	4.5 mm
D	6
F	8 mm
G	50 mm
H	10 mm
Acabado	acabado



52-1-3614 & 52-1-3616



52-1-4107 & 52-1-4110

