



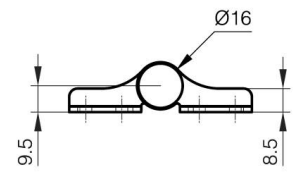
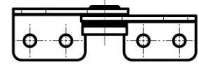
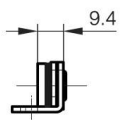
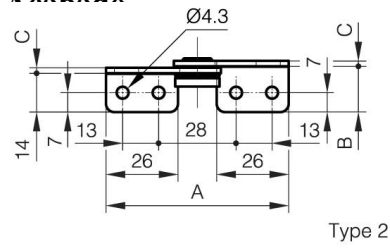
BISAGRA DE TORSIÓN A

15-7-3578

Proporciona estabilidad de torsión en ambas direcciones. Para uso en pareja: utilice el mismo par en ambas bisagras. Al instalar, asegúrese de que ambos ejes de las bisagras estén alineados. Vida útil: 20.000 ciclos. Temperatura de funcionamiento: 0°C - 40°C. Para aplicaciones horizontales.

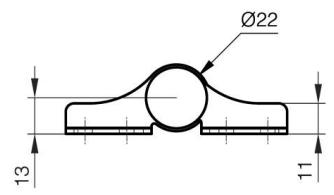
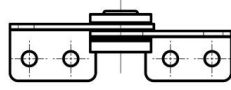
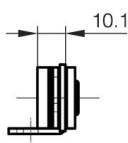
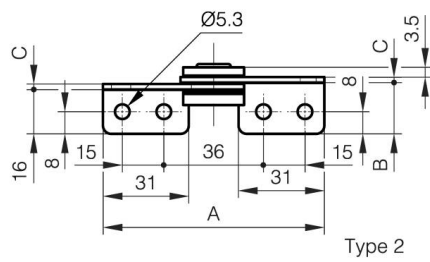
| | |
|-------------|--------|
| A | 66 mm |
| Nota | Tipo 1 |

| | |
|-----------------|----------------------|
| Material | 430 acero inoxidable |
| Peso (g) | 30 g |
| Par | 2.0 N.m N.m |
| B | 16.5 mm |
| C | 2 mm |
| Acabado | acabado |



Type 2

Type 1



Type 2

Type 1