



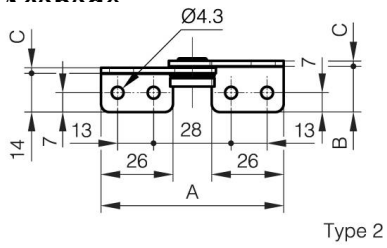
## **BISAGRA DE TORSIÓN A**

**15-7-3582**

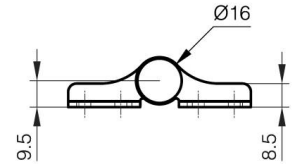
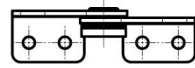
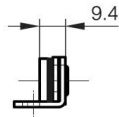
Proporciona estabilidad de torsión en ambas direcciones. Para uso en pareja: utilice el mismo par en ambas bisagras. Al instalar, asegúrese de que ambos ejes de las bisagras estén alineados. Vida útil: 20.000 ciclos. Temperatura de funcionamiento: 0°C - 40°C. Para aplicaciones horizontales.

|             |        |
|-------------|--------|
| <b>A</b>    | 80 mm  |
| <b>Nota</b> | Tipo 1 |

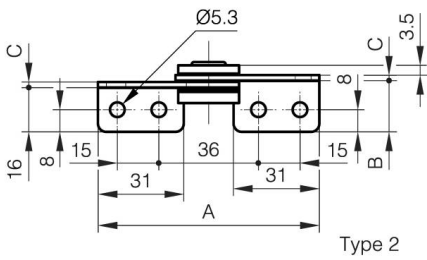
|                 |                      |
|-----------------|----------------------|
| <b>Material</b> | 430 acero inoxidable |
| <b>Peso (g)</b> | 65 g                 |
| <b>Par</b>      | 4.5 N.m N.m          |
| <b>B</b>        | 18.5 mm              |
| <b>C</b>        | 2 mm                 |
| <b>Acabado</b>  | acabado              |



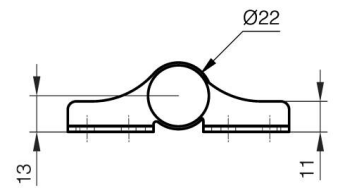
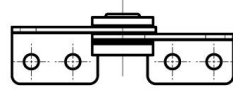
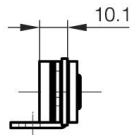
Type 2



Type 1



Type 2



Type 1