

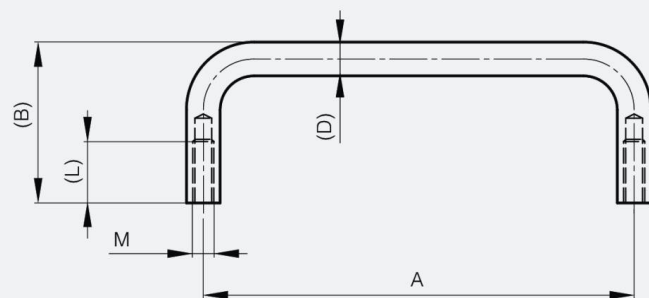


## **MANIGLIE A TRAZIONE A MONTAGGIO POSTERIORE DA 102 A 204 MM**

**19-1-3571**

<b>A</b>	204 mm
<b>Materiale</b>	acciaio
<b>Peso (g)</b>	105 g

<b>B</b>	38 mm
<b>D</b>	8
<b>Finitura</b>	cromato



<b>M</b>	5 mm
----------	------