



## **CERNIERE QUADRE CON DUE ALI DISASSATE E PERNO RIVETTATO - A 6 FORI**

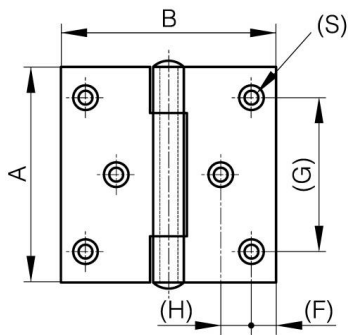
**52-1-3615**

Perno rivettato.

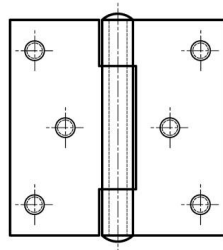
**A**

70 mm

<b>Materiale</b>	acciaio inossidabile 304
<b>Peso (g)</b>	156 g
<b>B</b>	70 mm
<b>C</b>	2 mm
<b>S (diamètre trou)</b>	4.5 mm
<b>D</b>	6
<b>F</b>	8 mm
<b>G</b>	50 mm
<b>H</b>	10 mm



52-1-3615 & 52-1-3617



52-1-4108 & 52-1-4111

