



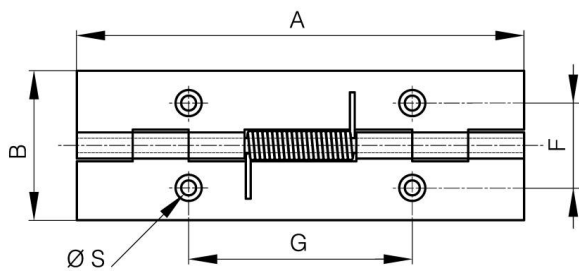
## **CERNIERE DI APERTURA A MOLLA LUNGHE 120 MM**

**71-1-3805**

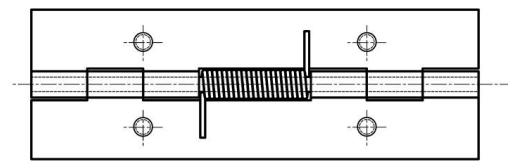
Forza della molla di apertura: M(0°): 0,85 Nm / M(90°): 0,56 Nm / M(180°): 0,28 Nm Molla in acciaio inossidabile.

<b>A</b>	120 mm
<b>Nota</b>	forata

<b>Materiale</b>	acciaio
<b>Peso (g)</b>	83 g
<b>B</b>	40 mm
<b>C</b>	1.5 mm
<b>S (diamètre trou)</b>	4 mm
<b>D</b>	4
<b>F</b>	22.7 mm
<b>G</b>	60 mm



71-1-3793 & 71-1-3805 & 71-1-3861



71-1-3879 & 71-1-3885 & 71-1-3887

