



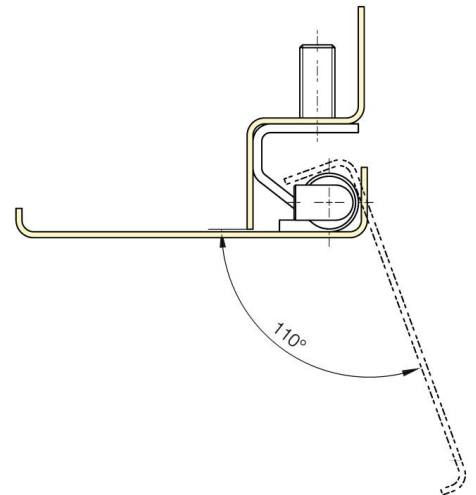
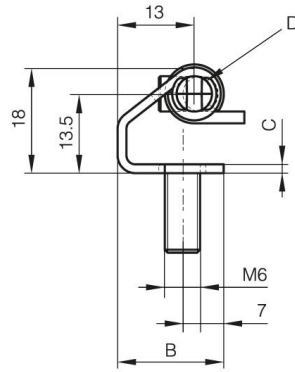
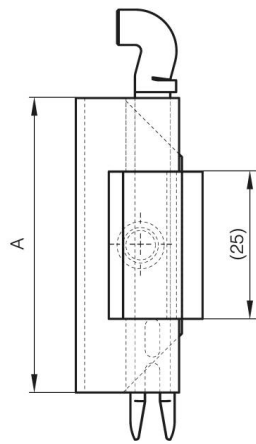
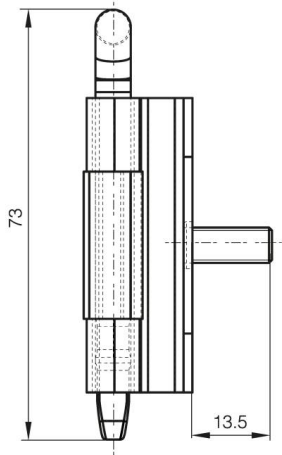
## **CERNIERA A SCOMPARSA CON PERNO SFILABILE - APERTURA 110°**

**60-1-3918**

Anta maschio in acciaio grezzo. Anta femmina in acciaio zincato con borchia. Perno removibile in POM.

<b>A</b>	50 mm
<b>Nota</b>	anta maschio in acciaio grezzo

<b>Materiale</b>	acciaio
<b>Peso (g)</b>	42 g
<b>B</b>	18 mm
<b>C</b>	1.5 mm
<b>Finitura</b>	zincato / verniciato



16-7-4293