



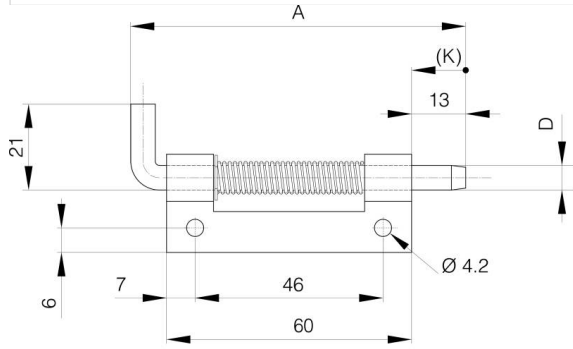
## **CERNIERE CON PERNO A MOLLA NASCOSTA A**

**12-1-3857**

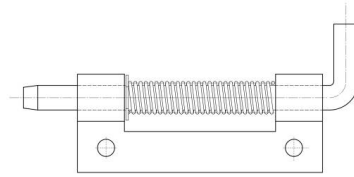
Molla in acciaio inossidabile. Cerniere in acciaio grezzo e acciaio zincato con perno zincato. Perno in acciaio inossidabile 304 per cerniere in acciaio inossidabile. Anello elastico in acciaio inossidabile 1.4122.

<b>A</b>	82 mm
<b>Nota</b>	tipo 1

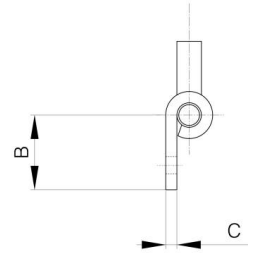
<b>Materiale</b>	acciaio
<b>Peso (g)</b>	46 g
<b>B</b>	18.2 mm
<b>C</b>	2.8 mm
<b>D</b>	6
<b>Finitura</b>	naturale



12-1-4313 & 12-1-4311 & 12-1-4315



12-1-4312 & 12-1-4310 & 12-1-4314



<b>K</b>	12 mm
----------	-------