



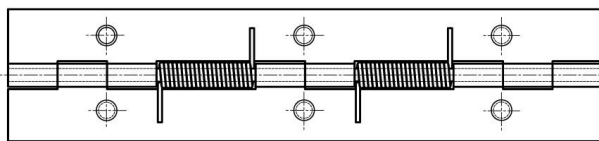
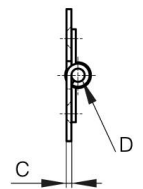
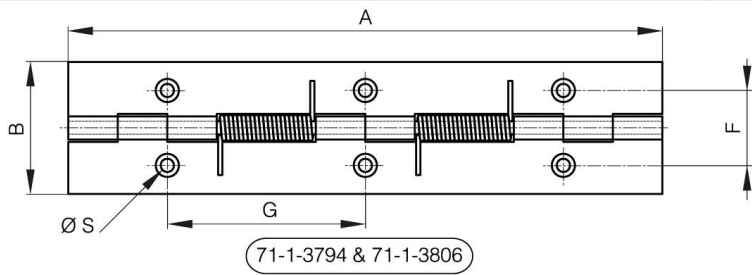
CERNIERE DI APERTURA A MOLLA LUNGHE 180 MM

71-1-3890

Forza della molla di apertura: M(0°): 1,7 Nm / M(90°): 1,1 Nm / M(180°): 0,56 Nm Molla in acciaio inossidabile.

A	180 mm
Nota	con perni M5

Materiale	acciaio
Peso (g)	142 g
B	40 mm
C	1.5 mm
S (diamètre trou)	4 mm
D	4
F	22.7 mm
G	60 mm
Finitura	zincato
Nouvelle référence	NS



(71-1-3881 & 71-1-3890)

