



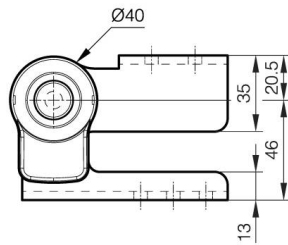
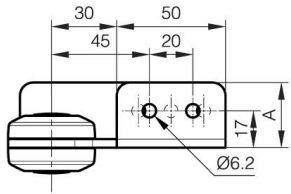
CERNIERA AD ASSE LIBERO A

15-7-3568

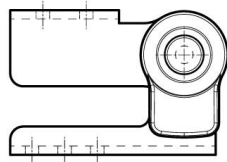
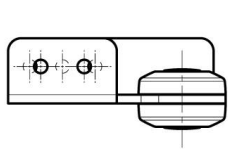
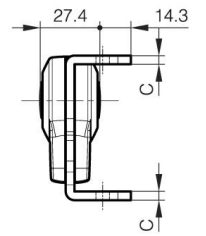
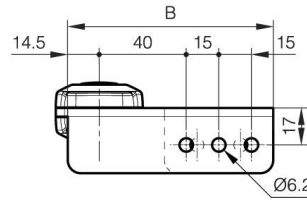
Cerniera ad asse libero consigliata da associare alla cerniera con bloccaggio multiangolo con leva A (15-7-3566 o 15-7-3567). Viti consigliate: M5.

A	30 mm
Nota	Tipo 1
Materiale	acciaio

Peso (g)	351 g
B	94.5 mm
C	4 mm
Finitura	placcato nickel
Nouvelle référence	NEW



15-7-3568



15-7-3569

